

## FF-studentsko vrednovanje rada strucnih i administrativnih sluzbi te drugih vidova studentskog zivota-14-15-2

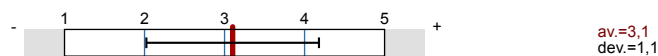


No. of responses = 37

## Overall indicators

## Global Index

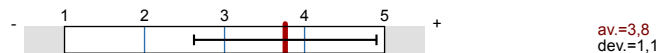
## 2. INFRASTRUKTURA SASTAVNICE



## 3. KNJIŽNICA I PROSTOR ZA UČENJE SASTAVNICE



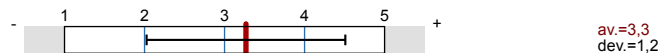
## 4. SVEUČILIŠNA KNJIŽNICA



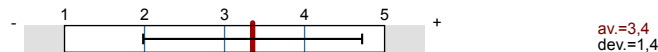
## 5. STUDENTSKA REFERADA



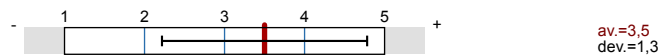
## 6. UPRAVA SASTAVNICE



## 7. STUDENTSKI ZBOR SASTAVNICE



## 8. STUDENTSKI SMJEŠTAJ



## 9. STUDENTSKA PREHRANA



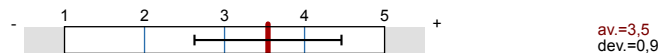
## 10. KULTURNO-UMJETNIČKI SADRŽAJI



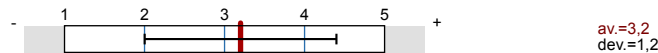
## 11. SPORT I REKREACIJA



## 12. ZDRAVSTVENA ZAŠTITA



## 13. MEĐUNARODNA SURADNJA



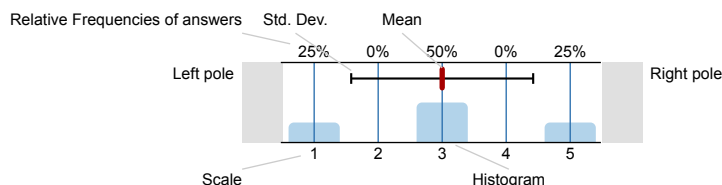
## 14. URED ZA OSOBE SA POSEBNIM POTREBAMA



## Survey Results

## Legend

Question text



n=No. of responses  
 av.=Mean  
 dev.=Std. Dev.  
 ab.=Abstention

## 1. UVOD

## 1.1) Sastavnica Sveučilišta u Splitu:

Filozofski fakultet  100% n=36

## 1.2) Spol:

ž  88.9% n=36  
m  11.1%

## 1.3) Godina studija:

1.  38.9% n=36  
2.  52.8%  
3.  2.8%  
4.  5.6%  
5.  0%  
6.  0%

## 1.4) Razina studija:

preddiplomski sveučilišni studij  88.9% n=36  
preddiplomski stručni studij  0%  
kratki stručni studij  0%  
diplomski sveučilišni studij  5.6%  
specijalistički diplomski stručni studij  0%  
integrirani sveučilišni preddiplomski i diplomski studij  5.6%

## 1.5) Studijski program:

FF - Hrvatski jezik i književnost  27.8% n=36  
FF - Engleski jezik i književnost  33.3%  
FF - Talijanski jezik i književnost  5.6%  
FF - Povijest umjetnosti  5.6%  
FF - Povijest  5.6%  
FF - Predškolski odgoj  22.2%

## 1.6) Godina upisa na studij:

2005.  0% n=36  
2006.  0%  
2007.  0%  
2008.  0%  
2009.  0%  
2010.  0%  
2011.  8.3%  
2012.  0%  
2013.  52.8%  
2014.  38.9%

1.7) Dosadašnji prosjek ocjena:

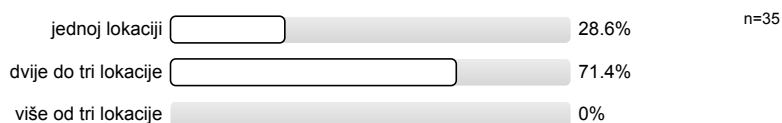


1.8) Roditelji mi žive u Splitu:

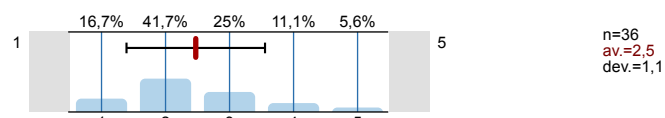


## 2. INFRASTRUKTURA SASTAVNICE

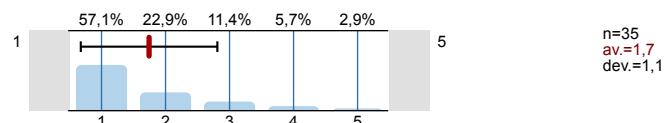
2.1) Nastavu na fakultetu pohađam na:



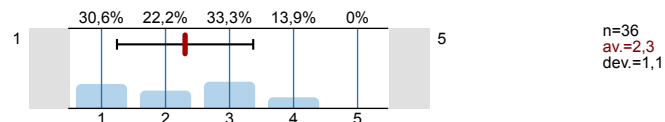
2.2) Prostorni uvjeti – učionice (veličina, osvijetljenje, grijanje...)



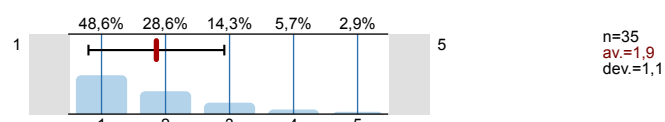
2.3) Prostorni uvjeti – laboratoriji i specijalizirani kabineti (veličina, opremljenost)



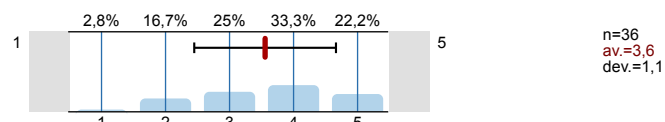
2.4) Informatička opremljenost kabineta i učionica



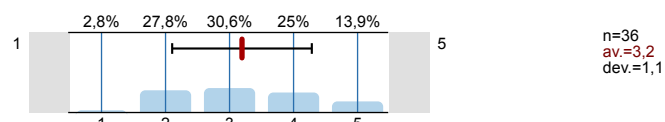
2.5) Informatička opremljenost i dostupnost za slobodne aktivnosti studenata



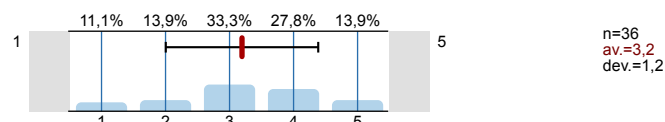
2.6) Mrežna stranica fakulteta (količina informacija i ažuriranje)



2.7) Mrežne stranice nastavnika (količina informacija i ažuriranje)

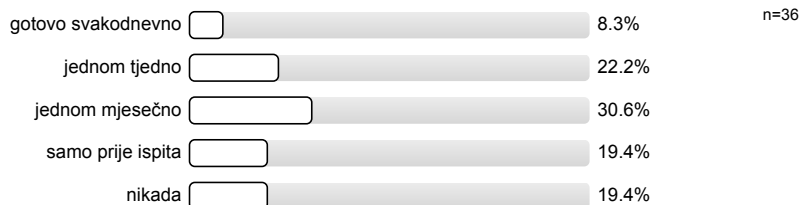


2.8) Mrežne stranice studenata

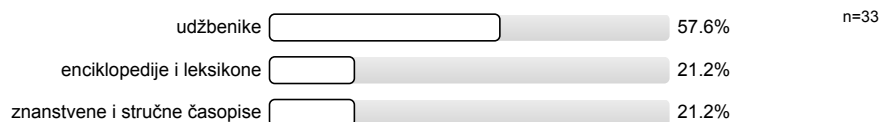


## 3. KNJIŽNICA I PROSTOR ZA UČENJE SASTAVNICE

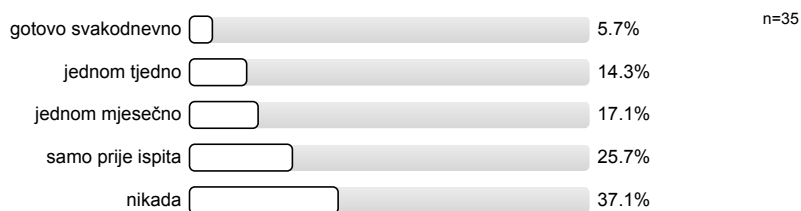
3.1) Koliko često posjećujete knjižnicu na fakultetu na kojemu studirate:



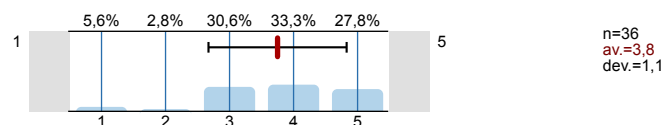
3.2) Koju građu najčešće koristite:



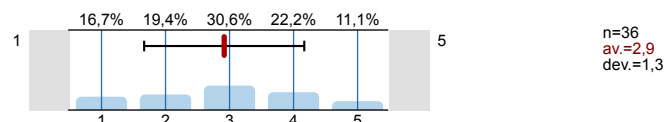
3.3) Čitaonicom u sklopu knjižnice i prostorom za učenje sastavnice se služite:



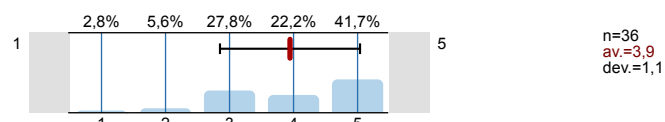
3.4) Radno vrijeme knjižnice:

n=36  
av.=3,8  
dev.=1,1

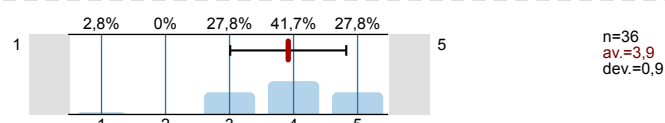
3.5) Prostorni uvjeti

n=36  
av.=2,9  
dev.=1,3

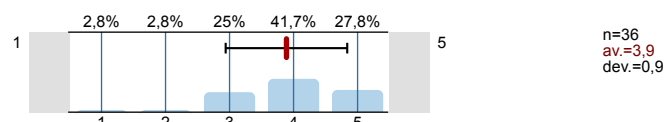
3.6) Ljubaznost osoblja:

n=36  
av.=3,9  
dev.=1,1

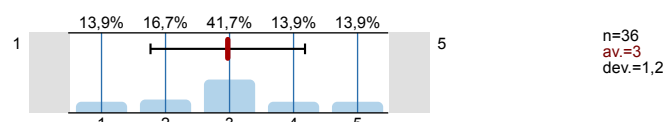
3.7) Brzina dobivanja knjiga:

n=36  
av.=3,9  
dev.=0,9

3.8) Pomoć u pretraživanju kataloga:

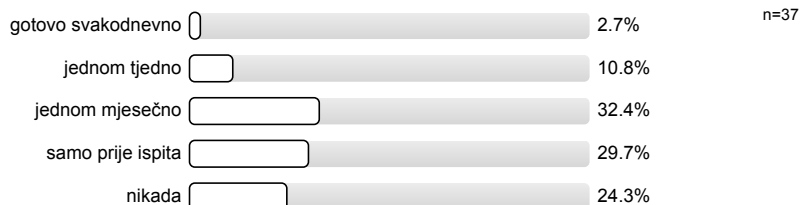
n=36  
av.=3,9  
dev.=0,9

3.9) Knjižnični fond:

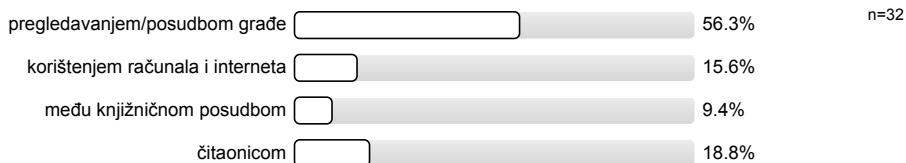
n=36  
av.=3  
dev.=1,2

## 4. SVEUČILIŠNA KNJIŽNICA

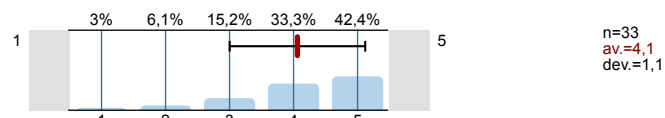
4.1) Koliko često posjećujete Sveučilišnu knjižnicu:



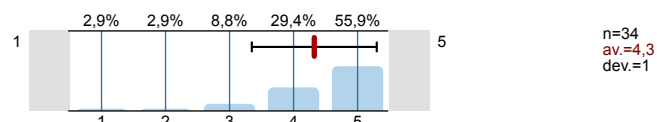
4.2) Kojim se uslugama Sveučilišne knjižnice najviše koristite:



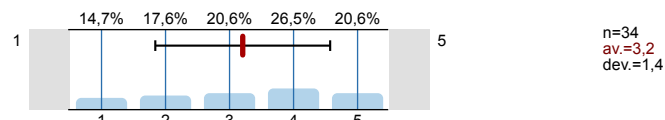
4.3) Radno vrijeme knjižnice:



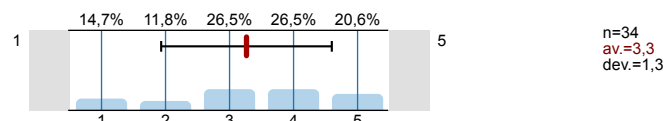
4.4) Prostorni uvjeti



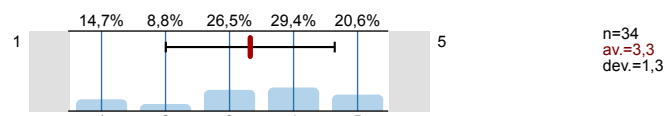
4.5) Ljubaznost osoblja:



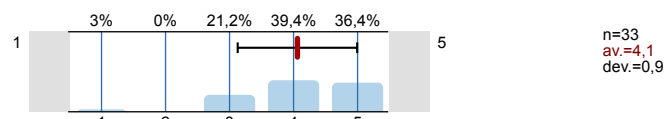
4.6) Brzina dobivanja knjiga:



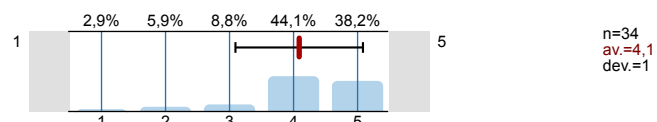
4.7) Pomoć u pretraživanju kataloga:



4.8) Knjižnični fond:

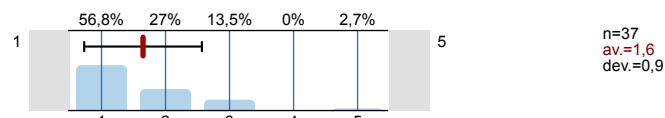


4.9) Informatička infrastruktura:

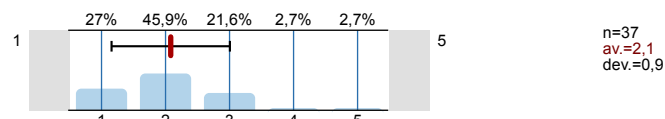


## 5. STUDENTSKA REFERADA

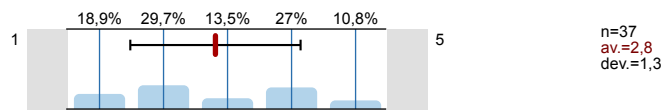
5.1) Radno vrijeme referade:



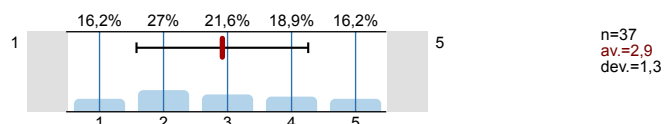
5.2) Prostorni uvjeti:



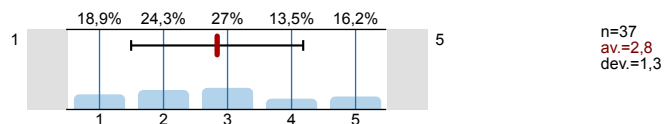
5.3) Ljubaznost i pristupačnost osoblja:



5.4) Pravodobna dostupnost informacija:

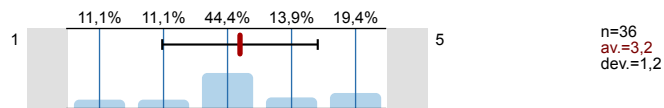


5.5) Kvaliteta dostupnih informacija:

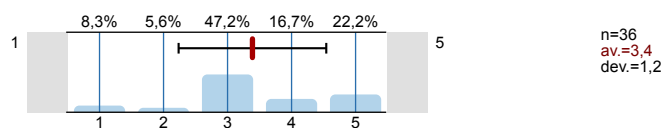


## 6. UPRAVA SASTAVNICE

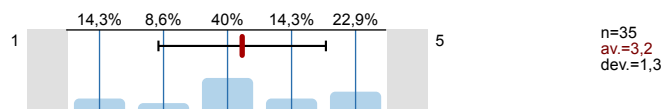
6.1) Dostupnost i pristupačnost članova uprave sastavnice:



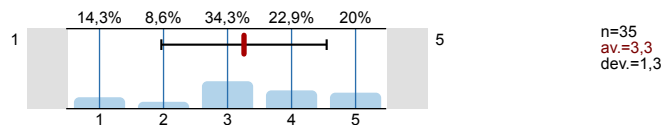
6.2) Odnos uprave sastavnice prema studentima (transparentnost, dostupnost točnih informacija...):



6.3) Zahtjeve studenata rješava u primjerenom roku:

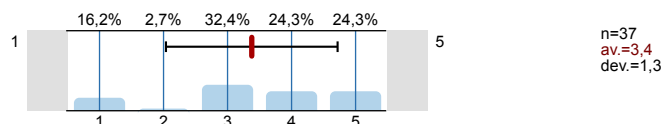


6.4) Podržavanjem studentskih prava:

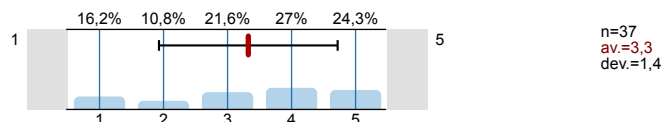


## 7. STUDENTSKI ZBOR SASTAVNICE

7.1) Dostupnost i pristupačnost članova studentskog zbora:



7.2) Odnosi sa studentima od strane studentskog zbora (transparentnost, dostupnost informacija...):

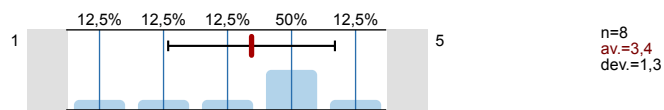


## 8. STUDENTSKI SMJEŠTAJ

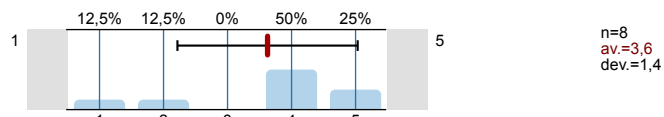
8.1) Smješten sam u studentskom domu



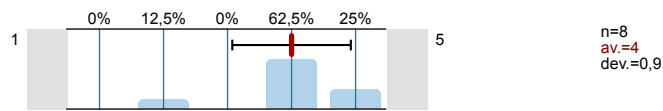
8.2) Uvjetima smještaja



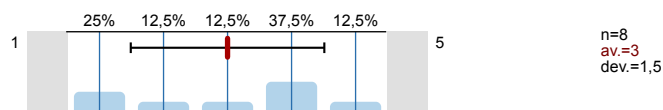
8.3) Javnim/zajedničkim prostorijama za učenje



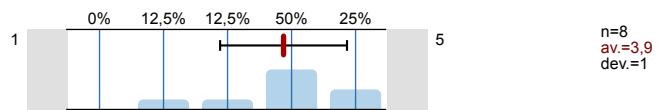
8.4) Higijenom/čistoćom zajedničkih prostorija:



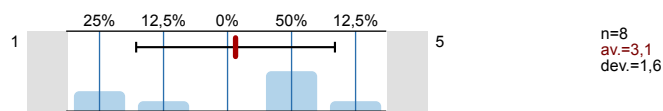
8.5) Poštivanjem reda i pravila ponašanja



8.6) Dostupnošću i ljubaznošću osoblja



8.7) Informatičkom opremljenošću

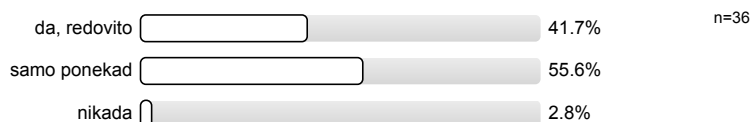


## 9. STUDENTSKA PREHRANA

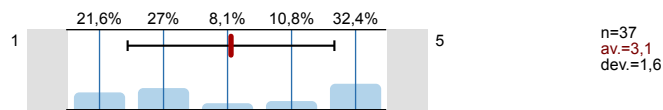
9.1) Imate li organiziranu studentsku prehranu (menza, kantina ili sl.)?



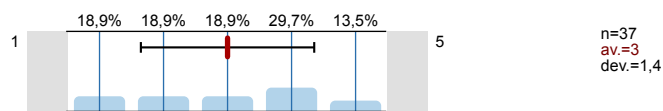
9.2) Hranite li se u studentskim menzama?



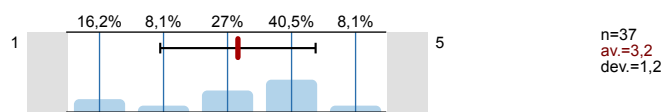
9.3) Udaljenost najbliže menze



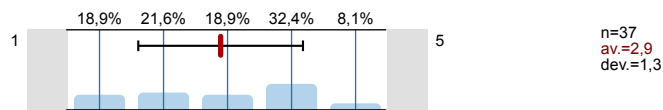
9.4) Radno vrijeme menze



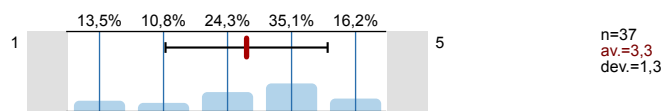
9.5) Pripremljenost hrane:



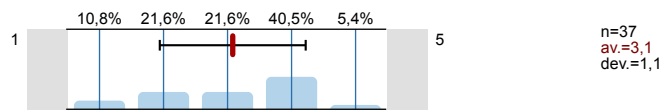
9.6) Nutritivna kvaliteta obroka:



9.7) Količina:

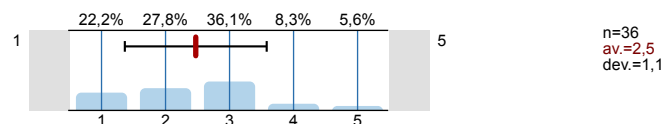


9.8) Opća ocjena kvalitete hrane:



## 10. KULTURNO-UMJETNIČKI SADRŽAJI

- 10.1) Procijenite svoje zadovoljstvo kulturno-umjetničkim sadržajima na Sveučilištu u Splitu, na ljestvici od 1 do 5, gdje je 1 nimalo zadovoljan, a 5 potpuno zadovoljan:

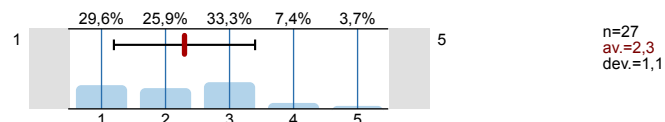


## 11. SPORT I REKREACIJA

- 11.1) Bavite li se sportom i rekreacijom tijekom studiranja?



- 11.2) Procijenite svoje zadovoljstvo prostorom i sadržajima za sport i rekreaciju na Sveučilištu u Splitu, na ljestvici od 1 do 5, gdje je 1 nimalo zadovoljan, a 5 potpuno zadovoljan:

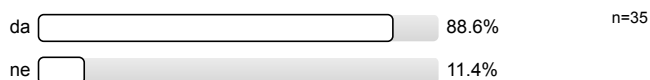


## 12. ZDRAVSTVENA ZAŠTITA

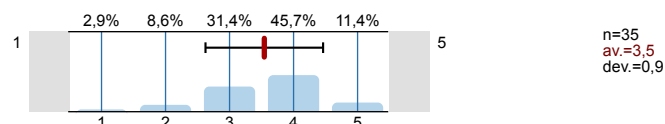
- 12.1) Jeste li zdravstveno osigurani?



- 12.2) Jesu li Vam dostupne usluge zdravstvene skrbi u mjestu studiranja?



- 12.3) Procijenite svoje zadovoljstvo kvalitetom zdravstvene skrbi u mjestu svog studiranja, na ljestvici od 1 do 5, gdje je 1 nimalo zadovoljan, a 5 potpuno zadovoljan:



- 12.5) Koristite li savjetovanište za studente na Filozofskom fakultetu koje je otvoreno za sve studente?



- 12.6) Koje bi, po vašem mišljenju, usluge trebalo pružati savjetovanište za studente?

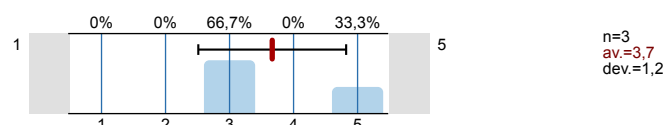


## 13. MEĐUNARODNA SURADNJA

- 13.1) Koristite li usluge Ureda za međunarodnu suradnju?

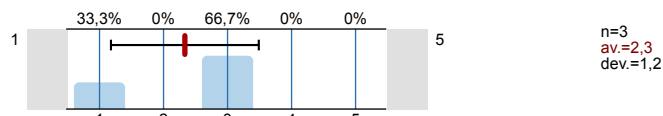


- 13.2) Radno vrijeme ureda:

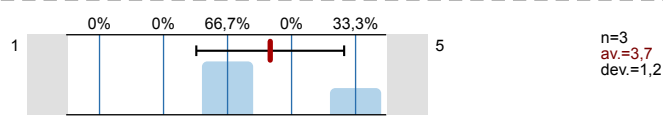




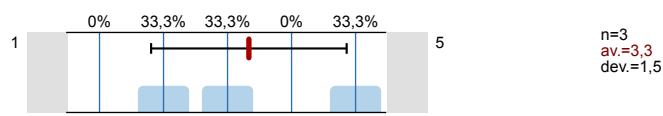
13.3) Prostorni uvjeti:



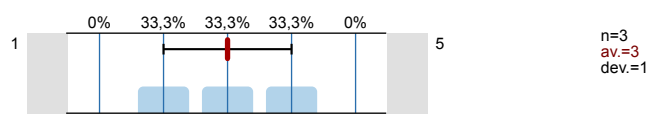
13.4) Ljubaznost i pristupačnost osoblja:



13.5) Rad osoblja:



13.6) Kvaliteta i brzina objavljivanja informacija na Web stranicama Ureda?



14. URED ZA OSOBE SA POSEBNIM POTREBAMA

14.1) Koristite li usluge Ureda za studente s posebnim potrebama?



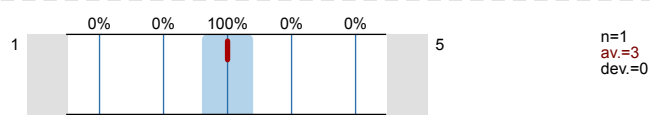
14.2) Jeste li zadovoljni pristupačnošću Ureda?



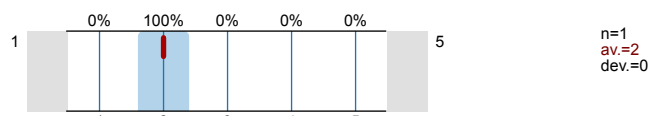
14.3) Olakšava li vam Ured studiranje?



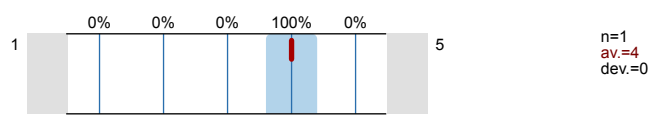
14.4) Radno vrijeme ureda:



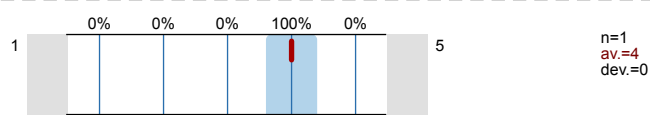
14.5) Prostorni uvjeti:



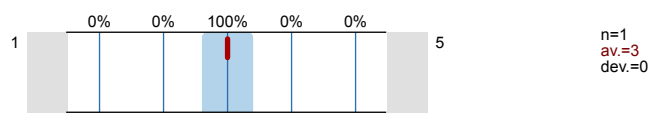
14.6) Ljubaznost i pristupačnost osoblja:



14.7) Rad osoblja:



14.8) Kvaliteta i brzina objavljivanja informacija na Web stranicama Ureda:

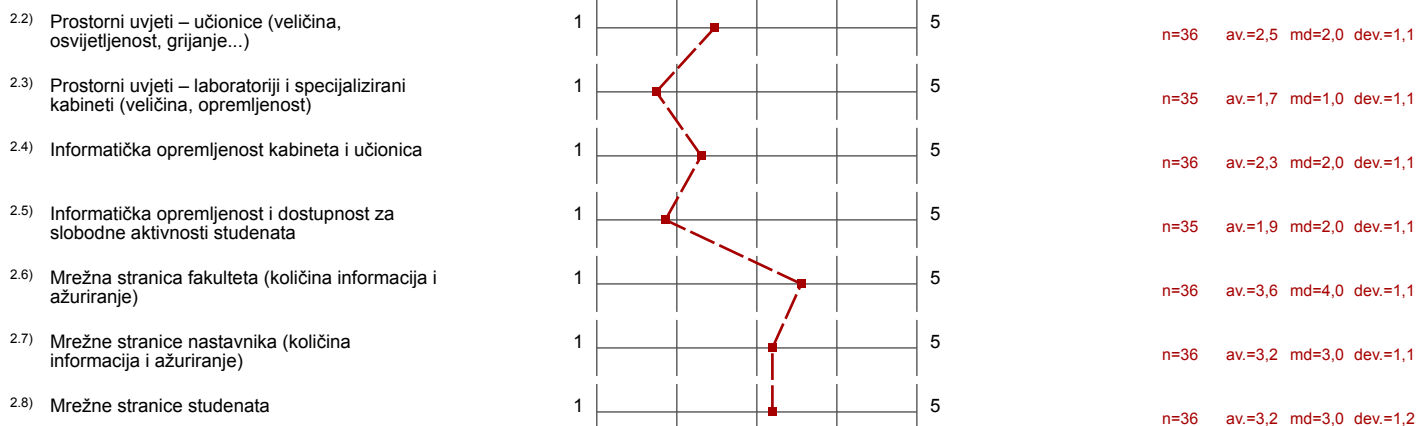


# Profile

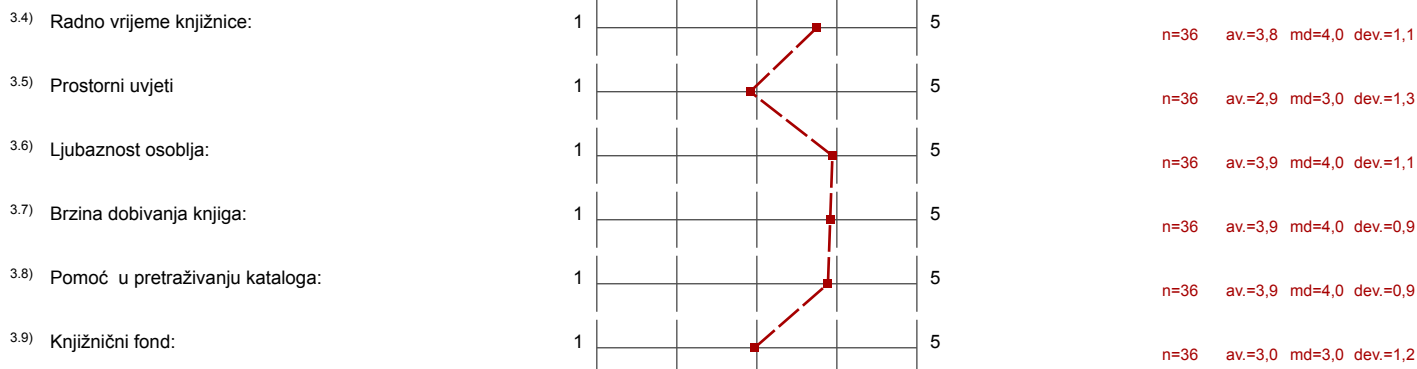
Compilation: FF-studentsko vrednovanje rada strucnih i administrativnih sluzbi te drugih vidova studentskog

Values used in the profile line: Mean

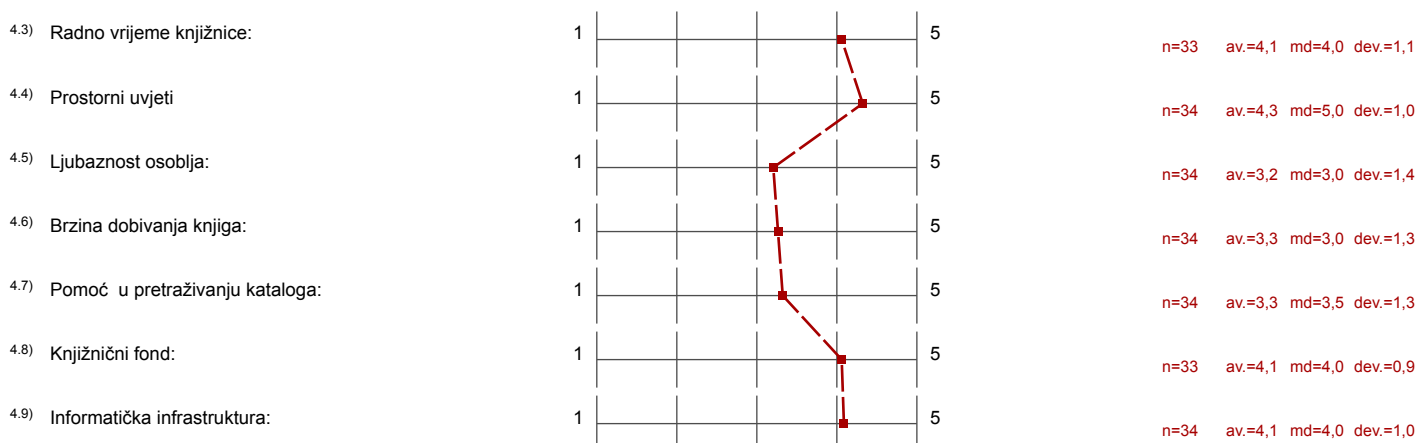
## 2. INFRASTRUKTURA SASTAVNICE



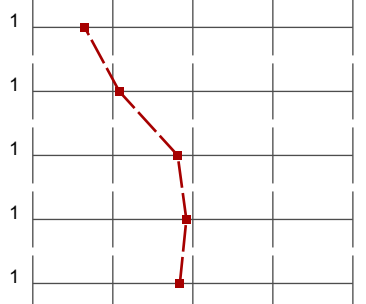
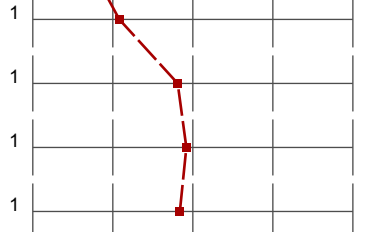
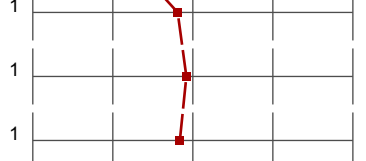
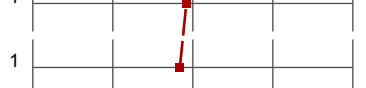

## 3. KNJIŽNICA I PROSTOR ZA UČENJE SASTAVNICE



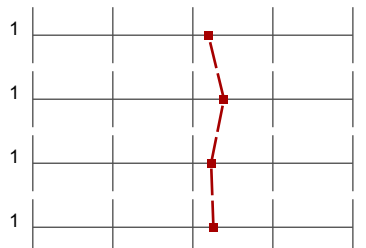
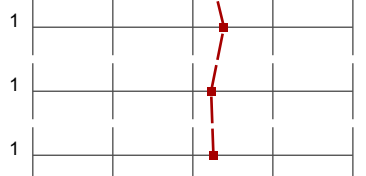
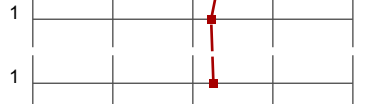

## 4. SVEUČILIŠNA KNJIŽNICA



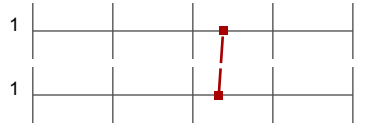
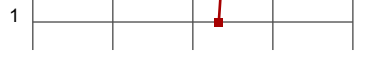
## 5. STUDENTSKA REFERADA

5.1) Radno vrijeme referade:		n=37 av.=1,6 md=1,0 dev.=0,9
5.2) Prostorni uvjeti:		n=37 av.=2,1 md=2,0 dev.=0,9
5.3) Ljubaznost i pristupačnost osoblja:		n=37 av.=2,8 md=3,0 dev.=1,3
5.4) Pravodobna dostupnost informacija:		n=37 av.=2,9 md=3,0 dev.=1,3
5.5) Kvaliteta dostupnih informacija:		n=37 av.=2,8 md=3,0 dev.=1,3

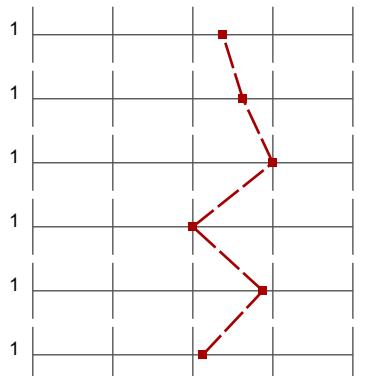
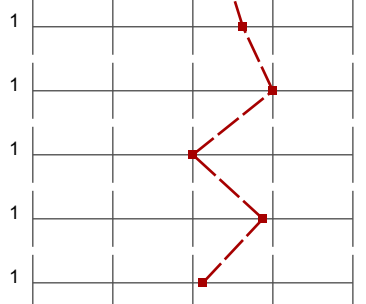
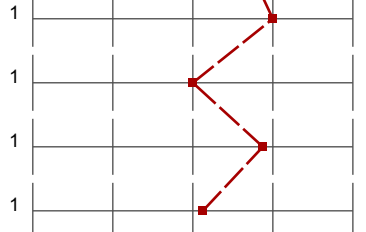
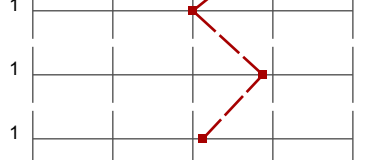


## 6. UPRAVA SASTAVNICE

6.1) Dostupnost i pristupačnost članova uprave sastavnice:		n=36 av.=3,2 md=3,0 dev.=1,2
6.2) Odnos uprave sastavnice prema studentima (transparentnost, dostupnost točnih informacija...):		n=36 av.=3,4 md=3,0 dev.=1,2
6.3) Zahtjeve studenata rješava u primjerenom roku:		n=35 av.=3,2 md=3,0 dev.=1,3
6.4) Podržavanjem studentskih prava:		n=35 av.=3,3 md=3,0 dev.=1,3

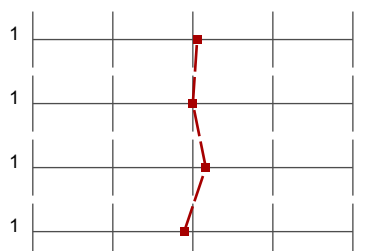
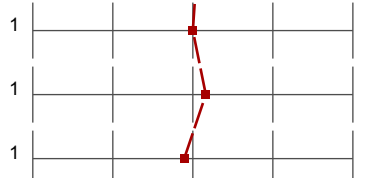


## 7. STUDENTSKI ZBOR SASTAVNICE



7.1) Dostupnost i pristupačnost članova studentskog zbora:		n=37 av.=3,4 md=3,0 dev.=1,3
7.2) Odnosi sa studentima od strane studentskog zbora (transparentnost, dostupnost informacija...):		n=37 av.=3,3 md=4,0 dev.=1,4

## 8. STUDENTSKI SMJEŠTAJ

8.2) Uvjetima smještaja		n=8 av.=3,4 md=4,0 dev.=1,3
8.3) Javnim/zajedničkim prostorijama za učenje		n=8 av.=3,6 md=4,0 dev.=1,4
8.4) Higijenom/čistoćom zajedničkih prostorija:		n=8 av.=4,0 md=4,0 dev.=0,9
8.5) Poštivanjem reda i pravila ponašanja		n=8 av.=3,0 md=3,5 dev.=1,5
8.6) Dostupnošću i ljubaznošću osoblja		n=8 av.=3,9 md=4,0 dev.=1,0
8.7) Informatičkom opremljenošću		n=8 av.=3,1 md=4,0 dev.=1,6

## 9. STUDENTSKA PREHRANA


9.3) Udaljenost najbliže menze		n=37 av.=3,1 md=3,0 dev.=1,6
9.4) Radno vrijeme menze		n=37 av.=3,0 md=3,0 dev.=1,4
9.5) Pripremljenost hrane:		n=37 av.=3,2 md=3,0 dev.=1,2
9.6) Nutritivna kvaliteta obroka:		n=37 av.=2,9 md=3,0 dev.=1,3

9.7) Količina:		n=37 av.=3,3 md=4,0 dev.=1,3
9.8) Opća ocjena kvalitete hrane:		n=37 av.=3,1 md=3,0 dev.=1,1

## 10. KULTURNO-UMJETNIČKI SADRŽAJI

10.1) Procijenite svoje zadovoljstvo kulturno-umjetničkim sadržajima na Sveučilištu u Splitu, na ljestvici od 1 do 5, gdje je 1 nimalo		n=36 av.=2,5 md=2,5 dev.=1,1
--	---	------------------------------






## 11. SPORT I REKREACIJA

11.2) Procijenite svoje zadovoljstvo prostorom i sadržajima za sport i rekreaciju na Sveučilištu u Splitu, na ljestvici od 1 do 5, gdje je 1 nimalo		n=27 av.=2,3 md=2,0 dev.=1,1
---	---	------------------------------






## 12. ZDRAVSTVENA ZAŠTITA

12.3) Procijenite svoje zadovoljstvo kvalitetom zdravstvene skrbi u mjestu svog studiranja, na ljestvici od 1 do 5, gdje je 1 nimalo zadovoljan,		n=35 av.=3,5 md=4,0 dev.=0,9
--	---	------------------------------

## 13. MEĐUNARODNA SURADNJA

13.2) Radno vrijeme ureda:		n=3 av.=3,7 md=3,0 dev.=1,2
13.3) Prostorni uvjeti:		n=3 av.=2,3 md=3,0 dev.=1,2
13.4) Ljubaznost i pristupačnost osoblja:		n=3 av.=3,7 md=3,0 dev.=1,2
13.5) Rad osoblja:		n=3 av.=3,3 md=3,0 dev.=1,5
13.6) Kvaliteta i brzina objavljivanja informacija na Web stranicama Ureda?		n=3 av.=3,0 md=3,0 dev.=1,0

## 14. URED ZA OSOBE SA POSEBNIM POTREBAMA

14.4) Radno vrijeme ureda:		n=1 av.=3,0 md=3,0 dev.=0,0
14.5) Prostorni uvjeti:		n=1 av.=2,0 md=2,0 dev.=0,0
14.6) Ljubaznost i pristupačnost osoblja:		n=1 av.=4,0 md=4,0 dev.=0,0
14.7) Rad osoblja:		n=1 av.=4,0 md=4,0 dev.=0,0
14.8) Kvaliteta i brzina objavljivanja informacija na Web stranicama Ureda:		n=1 av.=3,0 md=3,0 dev.=0,0

## Comments Report

## 12. ZDRAVSTVENA ZAŠTITA

<sup>12.4)</sup> Vaše primjedbe na dostupnost i kvalitetu zdravstvene skrbi u mjestu studiranja:

■ /

- USPOREN I ALJKAV SUSTAV KOJI ONEMOGUĆAVA PRAVOVREMENO LIJEČENJE TE NEZAINTERESIRANI I NEDOVOLJNO STRUČNI ZDRAVSTVENI RADNICI KOJI ONEMOGUĆAVAJU VALJANE TRETMANE. ZDRAVSTVENE USLUGE SU VRLO NISKE I NESTRUČNE KVALITETE, TE SKUPE U ODNOSU NA STANDARD, A OSOBLJE JE NELJUBAZNO ČAK NEPRIJATELJSKI NASTROJENO.

## 13. MEĐUNARODNA SURADNJA

<sup>13.7)</sup> Ako imate primjedbe, sugestije ili zapažanja vezana za Ured za međunarodnu suradnju, molimo da to iznesete ovdje:

■ /

## 14. URED ZA OSOBE SA POSEBNIM POTREBAMA

<sup>14.9)</sup> Ako imate primjedbe, sugestije ili zapažanja vezana za Ured i/ili za uvjete studiranja osoba sa posebnim potrebama, molimo da to iznesete ovdje:

■ /